



window and door systems

Ecofutural

- three-chamber window system used to construct windows with high thermal insulation performance
- the Ecofutural system is available in a version with increased thermal insulation performance, system options:
- options of the Ecofutural system:
 - Ecofutural i – with insulation around the perimeter at the place where the glass adheres to the profile
 - Ecofutural i+ – with insulation around the perimeter at the place where the glass adheres to the profile and with insulation in the space between the thermal breaks
- system design allows you to design a monoblock window and a door with a shifted axis of rotation – PIVOT doors
- profile shapes adapted to the installation of various types of perimeter hardware intended for the PVC groove
- possible profile bending (detailed specification of profiles and details of technical parameters of profile bending available in the authorised zone at www.aliplastpoland.com)
- wide range of colours – RAL palette (Qualicoat 1518), textured colours, Aliplast Wood Colour Effect – wood-like colours, Aliplast Loft View – colours imitating stone surfaces (Qualideco PL-0001), anodised colour (Qualanod 1808), bi-colour



window and door systems

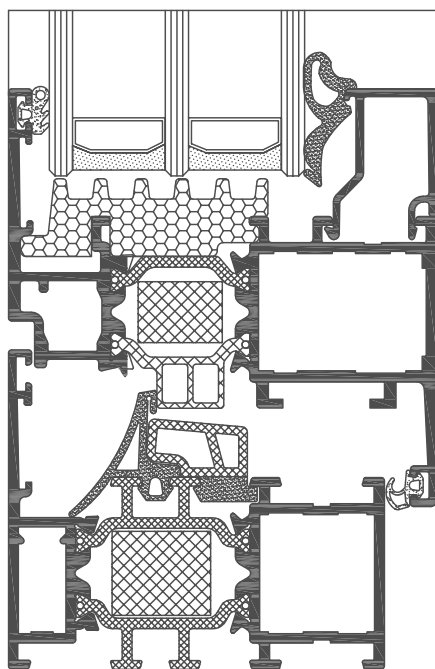
technical specification

system	material	depth of frame	depth of sash	glazing range	type of windows	door type
EF	aluminium / polyamide	65 to 153 mm	74 mm	fix 4 to 50 mm / window 13 to 59 mm	fix, turn-only, tilting, turn-and-tilt	pivot

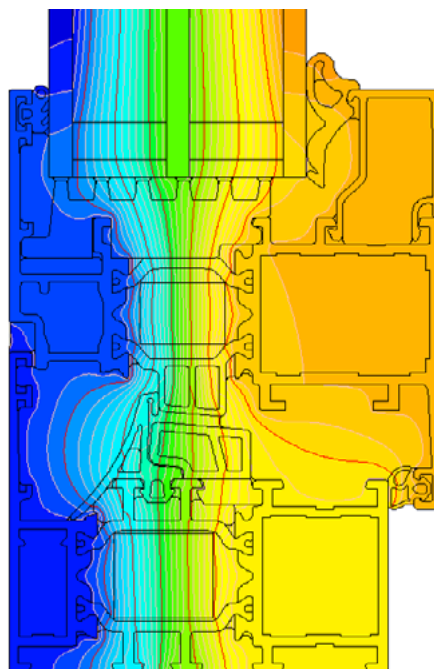
performance

system	thermal insulation Uf*	air permeability	windload resistance	watertightness
EF	Uf from 1.50 W/m ² K	Class 4; EN 12207	Class C4 (1600 Pa); EN 12210	Class 9A (600 Pa); EN 12208
EF i	Uf from 1.44 W/m ² K	Class 4; EN 12207	Class C4 (1600 Pa); EN 12210	Class 9A (600 Pa); EN 12208
EF i+	Uf from 1.27 W/m ² K	Class 4; EN 12207	Class C4 (1600 Pa); EN 12210	Class 9A (600 Pa); EN 12208

* Thermal insulation is dependent on a combination of profiles and thickness of the filling



cross-section of the EF window (EF010 + EF020)



example isotherm arrangement for the EF system (EF010 + EF020)