



window system

Ecofutural OC

- three-chamber window system with high thermal insulation performance
- system featuring a specially designed frame shape covering the entire height of the sash profile
- glazing bead as a great advantage, not visible from the inside
- system design allowing the construction of a monoblock window
- very narrow sash connection (movable mullion) – 77 mm, ensuring the structure is slender
- profiles prepared for the installation of external roller shutters are available in the system
- wide range of colours – RAL palette (Qualicoat 1518), textured colours, Aliplast Wood Colour Effect – wood-like colours, Aliplast Loft View – colours imitating stone surfaces (Qualideco PL-0001), anodised colour (Qualanod 1808), bi-colour

window system

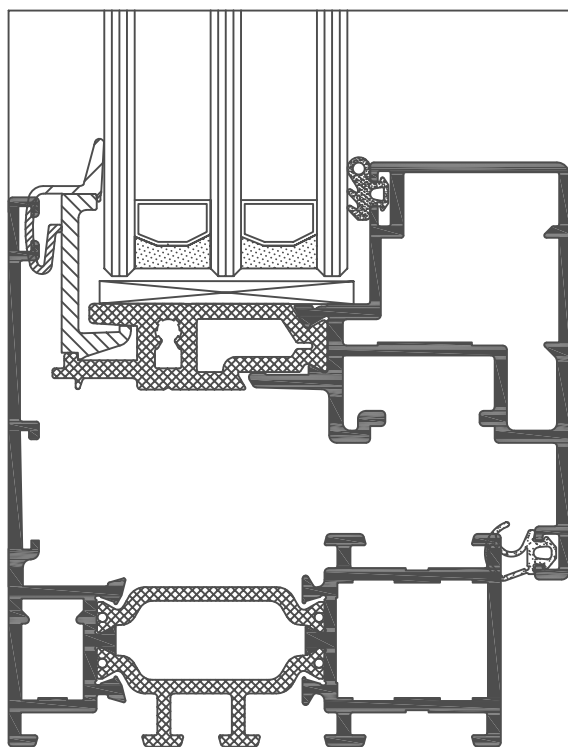
technical specification

system	material	depth of frame	depth of sash	glazing range	type of windows
EF OC	aluminium / polyamide	65 to 177 mm	68 mm	fix 21 to 26 mm / window 21 to 32 mm	fix, turn-only, tilting, turn-and-tilt, hidden sash

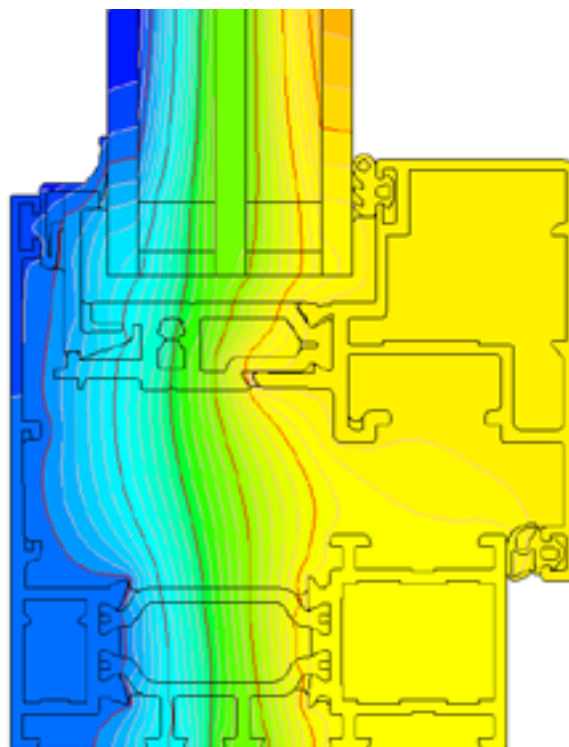
performance

system	thermal insulation U_f^*	air permeability	windload resistance	watertightness
EF OC	U_f from 1.66 W/m ² K	Class 4; EN 12207	Class C3 (1200 Pa); EN 12210	Class E900 (900 Pa); EN 12208

* Thermal insulation is dependent on a combination of profiles and thickness of the filling



cross-section of the EF OC window (EF214 + EF222)



example isotherm arrangement for the Ecofutural OC system (EF214 + EF222)