


**fire protection systems**
**FR 65**

FR 65 EI60

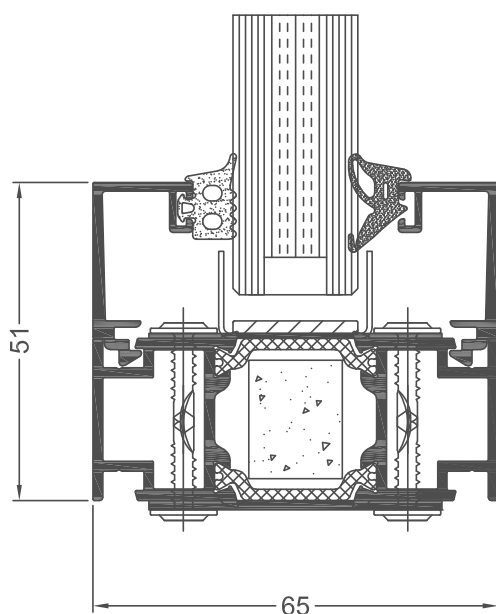
FR 65 EI30

- \_ thermally insulated fire protection system; application: indoor installations
- \_ **structures designed on the basis of the FR65 system feature fire rating for walls EI30, EI60 and feature fire rating for doors EI30, EI60**
- \_ installation depth: 65 mm
- \_ symmetrically designed profile, middle chamber filled with gypsum infill elements (between thermal separation sheets)
- \_ compatible with systems with the installation depth of system 65 mm (Imperial, Ecofutural)
- \_ possibility of using a double glazing unit (glazing: 17 mm to 25 mm)
- \_ option of panel infill (panel thickness 17 mm): gypsum filled panels
- \_ structures: single and double doors, fixed glazing
- \_ single-point and multi-point door locks, electric door strikes, panic hardware
- \_ cover plate hinges
- \_ solutions with and without thresholds
- \_ door kick plates (high plinth block),
- \_ optimised profiles (one profile type for the door frame and leaf)
- \_ quick and simple prefabrication (no processing of the glazing bar)
- \_ acoustics – acoustic testing of double-leaf doors featuring fire rating EI30 and EI60 for indoor installations: from 37 dB, gypsum filled panels: 33 dB
- \_ a wide range of colours – RAL palette (Qualicoat 1518), texture colours, Aliplast Wood Colour Effect (wood-like colours), Aliplast Loft View – colours imitating stone surfaces (Qualideco PL-0001), anodised colour (Qualanod 1808), bi-colour

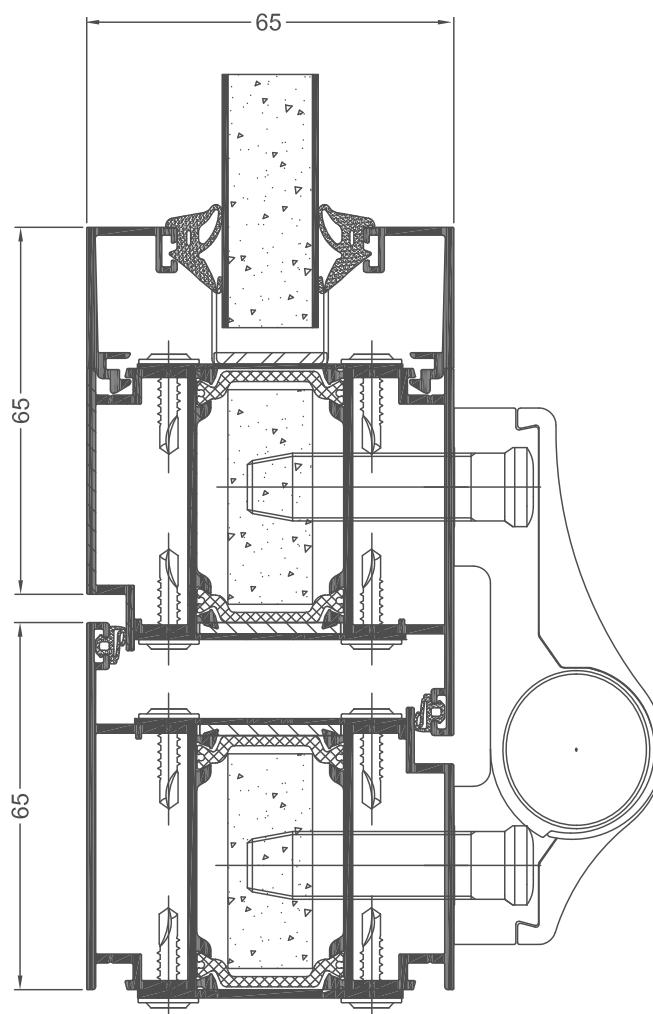


**fire protection systems**
**technical specification**

system	material	depth of frame	depth of leaf	glazing range	maximum door sizes
FR65	aluminium / polyamid	65 mm	65 mm	17-25 mm	single-leaf doors EI30: 1400 x 2500 mm double-leaf doors EI30: 2690 x 2500 mm single-leaf doors EI60: 1400 x 2500 mm double-leaf doors EI60: 2690 x 2500 mm fixed wall EI30: 4930 x 3104 mm fixed wall EI60: 4930 X 2904 mm



FR65 FIX cross section (FR030)



FR65 door cross section (FR024 + FR024)