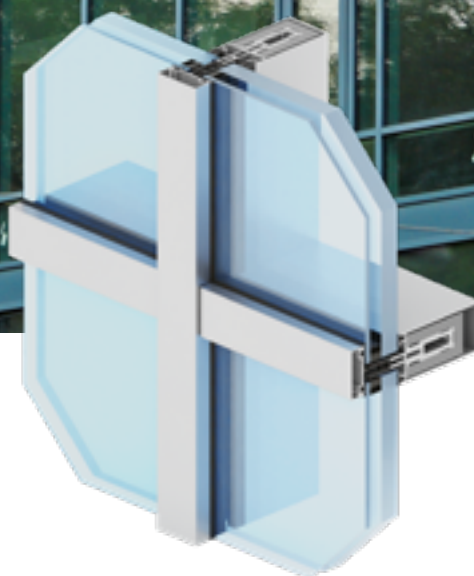




fire protection systems



MC FIRE

- a mullion-transom wall system used to design and construct lightweight fire-rated curtain walls conforming to the EI30 and EI60 fire resistance class
- the system is based on a framed load-bearing structure consisting of vertical (mullion) and horizontal (transom) aluminium shaped sections with a width of 55 mm
- in order to obtain fire resistance of aluminium shaped sections, the mullions and transoms are fitted with special flame-retardant inserts (aluminium shaped sections filled with a flame-retardant compound)
- the appearance of the fire-rated facade is the same as the appearance of the mullion-transom facade; therefore, the joint of the fire-rated facade and the standard facade can be optically invisible
- a wide range of decorative cover caps makes it possible to obtain a modern and individual design of the facade
- a wide range of colours – RAL palette (Qualicoat 1518), texture colours, Aliplast Wood Colour Effect (wood-like colours), Aliplast Loft View – colours imitating stone surfaces (Qualideco PL-0001), anodised colour (Qualanod 1808), bi-colour

fire protection systems

technical specification

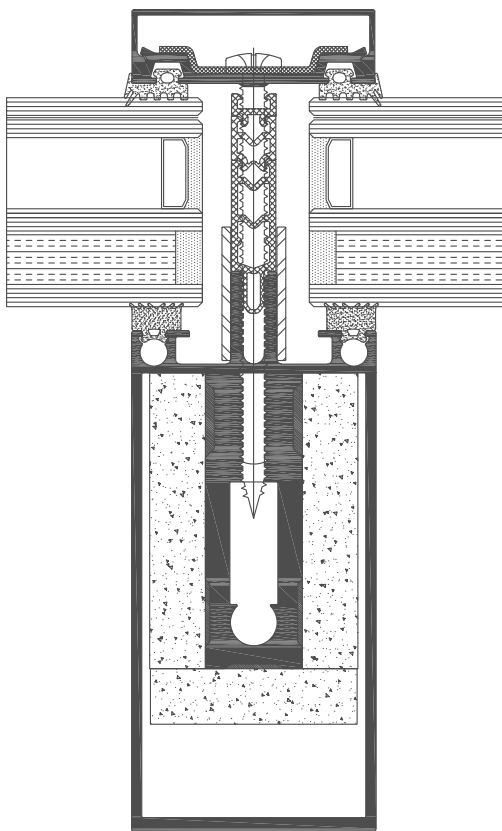
system	material	depth mullion	depth transom	glazing range	mullions rigidity	transom rigidity
MCF	aluminium	10-326 mm	10-294 mm	4-59 mm	111,7-4092 cm ⁴ *	131,7-2293 cm ⁴ *

* There is a possibility to use additional reinforcements

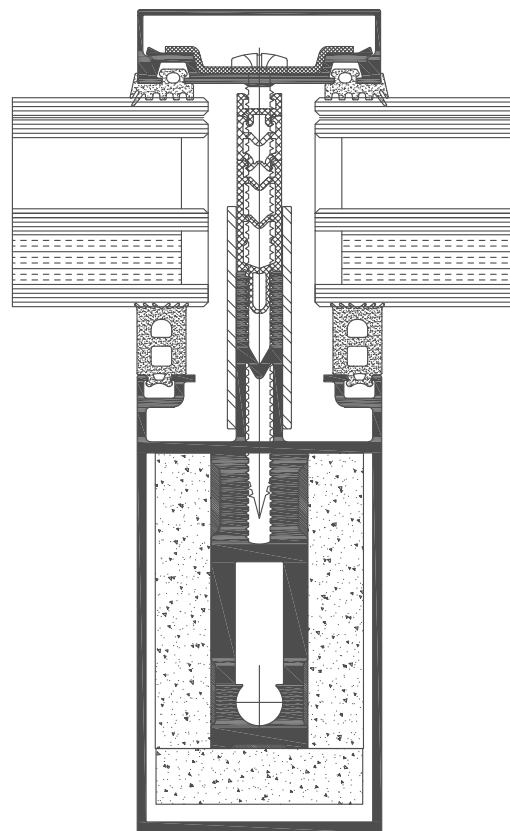
performance

system	thermal insulation Uf*	air permeability	windload resistance	watertightness
MCF	Uf from 1,03 W/m ² K	Class AE1300; EN 12152	Class 1500 - 2600 Pa; EN 13116	Class RE1500; EN 12154

* Thermal insulation is dependent on a combination of profiles and thickness of the filling



MC FIRE transom cross section (MC534)



MC FIRE mullion cross section (MC014)